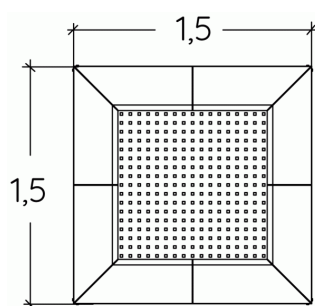
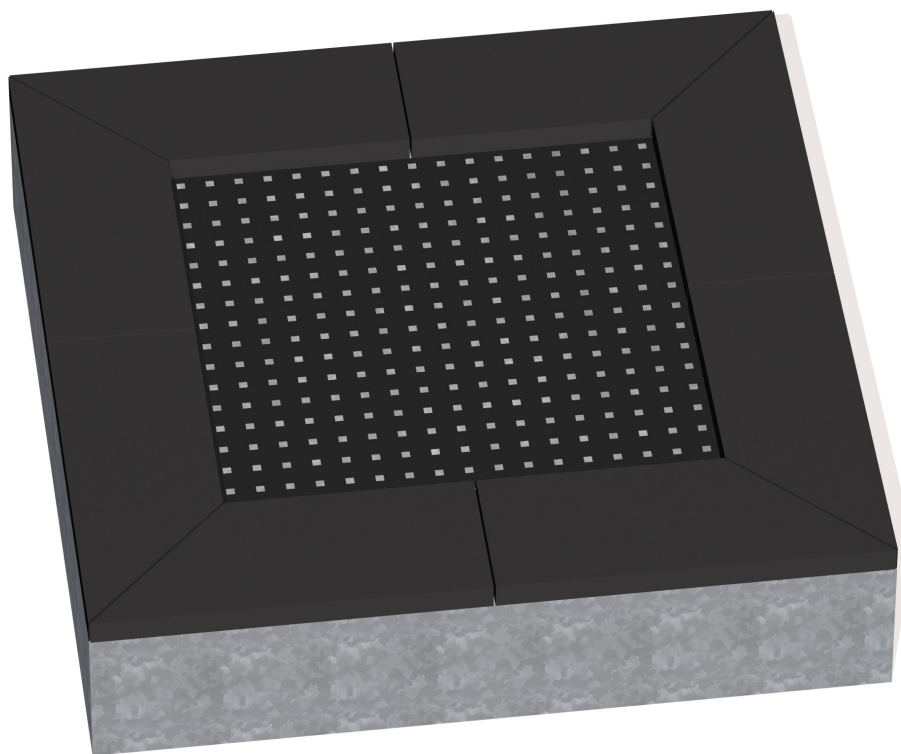


Motor inclusion
Sensory inclusion
Mental inclusion



The space above the trampoline must be free from any obstacle up to a height of 3.50 metres, measured from the bounce surface. Manual wheelchairs only.



Play value : 2

meeting



x1

balancing

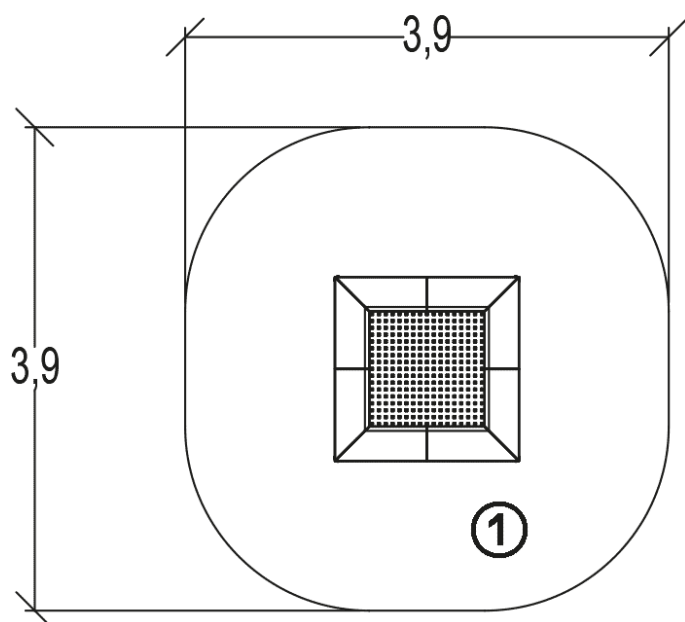




x1

Installation of equipment

IMPORTANT: It is essential to refer to the installation instructions for information on the size of the safety areas.

— Impact area (minimum normative surface)
- - - Free space



		
1	1m	11,5m ²



2

01h00

0m³

11.5m²

170kg

-



EN

1176



2-10



2



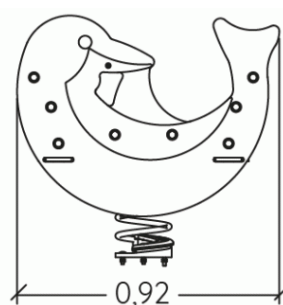
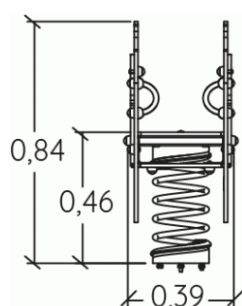
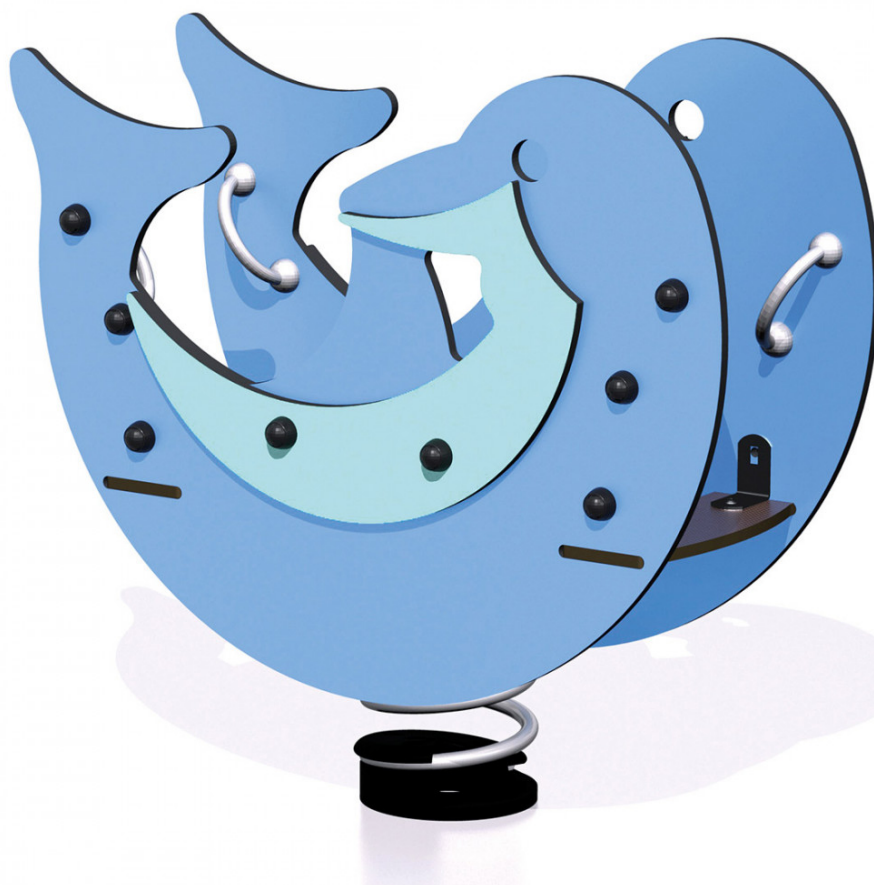
0,6m



1 = 0,92m
2 = 0,39m
3 = 0,84m



Motor inclusion
Sensory inclusion
Mental inclusion



Play value :

4

role play



x1

meeting



x1

balancing



x1

Oscillate



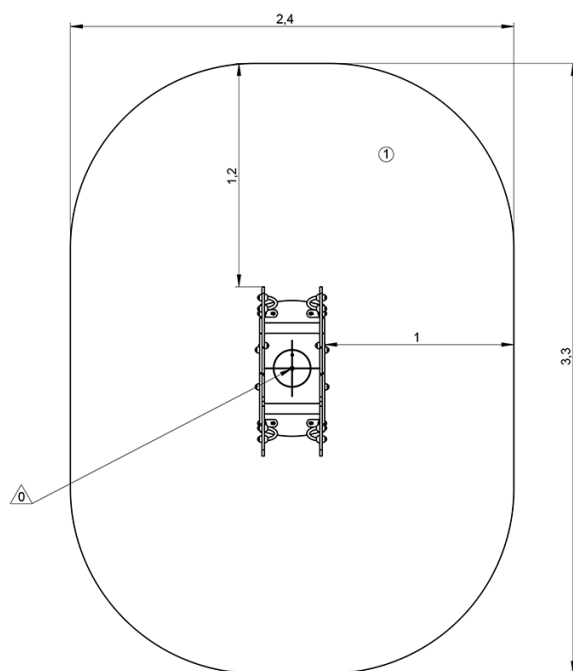
x1

Installation of equipment

IMPORTANT: It is essential to refer to the installation instructions for information on the size of the safety areas.

— Impact area (minimum normative surface)

- - - Free space



1	0,6m	7m ²
---	------	-----------------



1



01h15



0m³



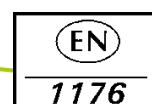
7m²



44kg



11kg





1-5



5



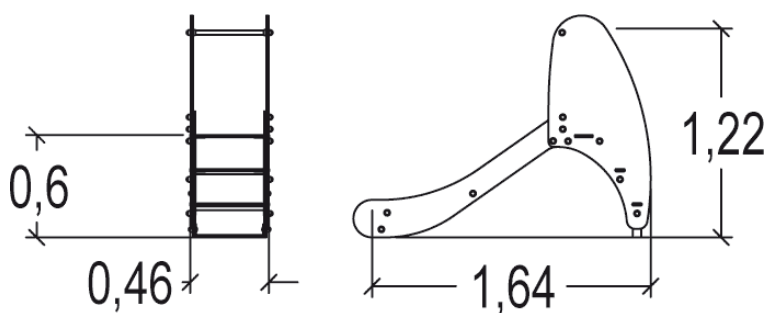
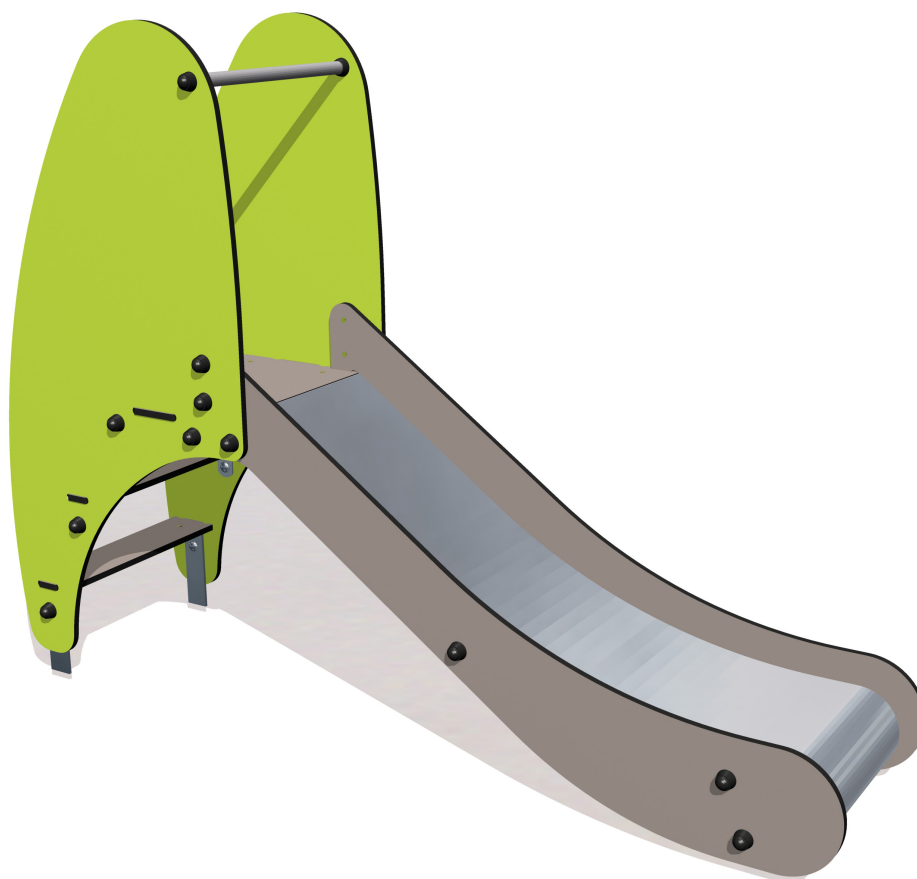
1m



1 = 1,75m
2 = 0,46m
3 = 1,3m



Motor inclusion
Sensory inclusion
Mental inclusion



Play value : 3

sliding



x1

meeting



x1

climbing



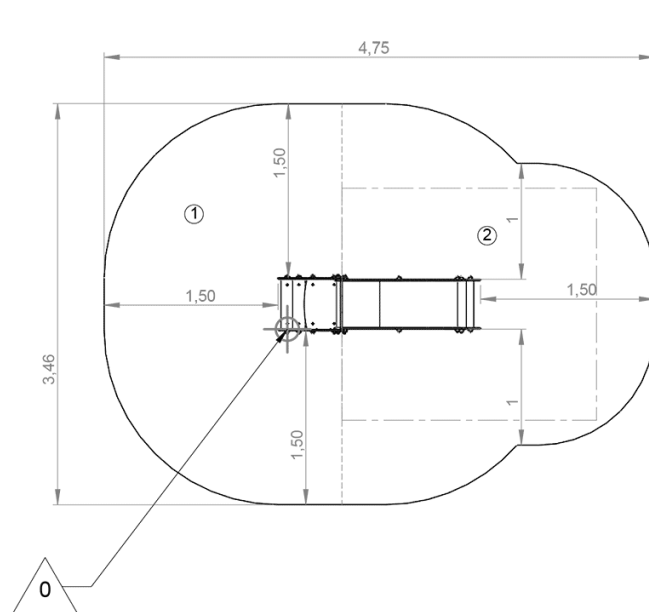
x1



Installation of equipment

IMPORTANT: It is essential to refer to the installation instructions for information on the size of the safety areas.

— Impact area (minimum normative surface)

- - - Free space



		
1	0,6m	6,5m ²
2	1m	7,5m ²



2

02h00

0.1m³

14m²

55kg

11kg

EN
1176

Product Information

FITSFISH - Tile Slide Fish Play Panel

BS EN 1176 - Designed to British & European Standards

MATERIALS

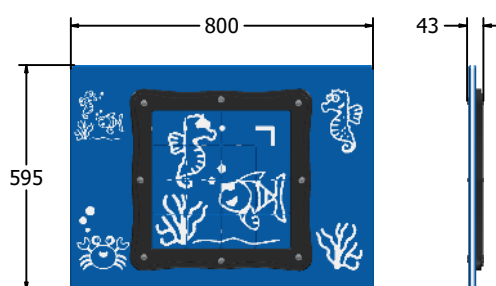
Panel - Two Colour High Density Polyethylene (HDPE)

SUPPLY METHOD

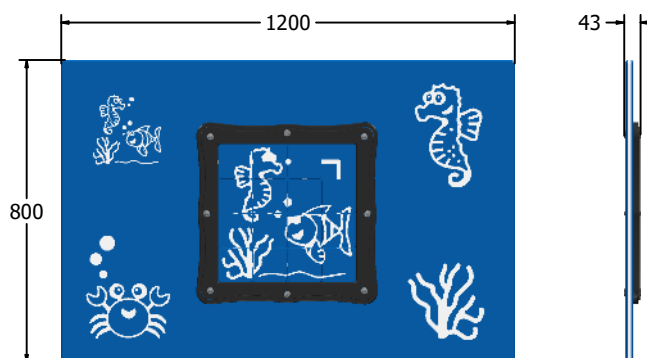
Panel - Pre-assembled singular panel



DIMENSIONS



FITSFISH6



FITSFISH3

TECHNICAL

Age Range: 2+ Years
Largest Part: FITSFISH6 - 595 x 800 x 43mm
Total Weight: FITSFISH6 - 11kg
Surfacing: N/A

Age Range: 2+ Years
Largest Part: FITSFISH3 - 800 x 1200 x 43mm
Total Weight: FITSFISH3 - 19.5kg
Surfacing: N/A

IMPORTANT: you must specify the colour option you require at the time of order if it is different from the colour listed/shown above, requirements are subject to availability at the time of order